

PLAT OF PORT SEWALL HARBOR & TENNIS CLUB

SHEET 3 OF 4

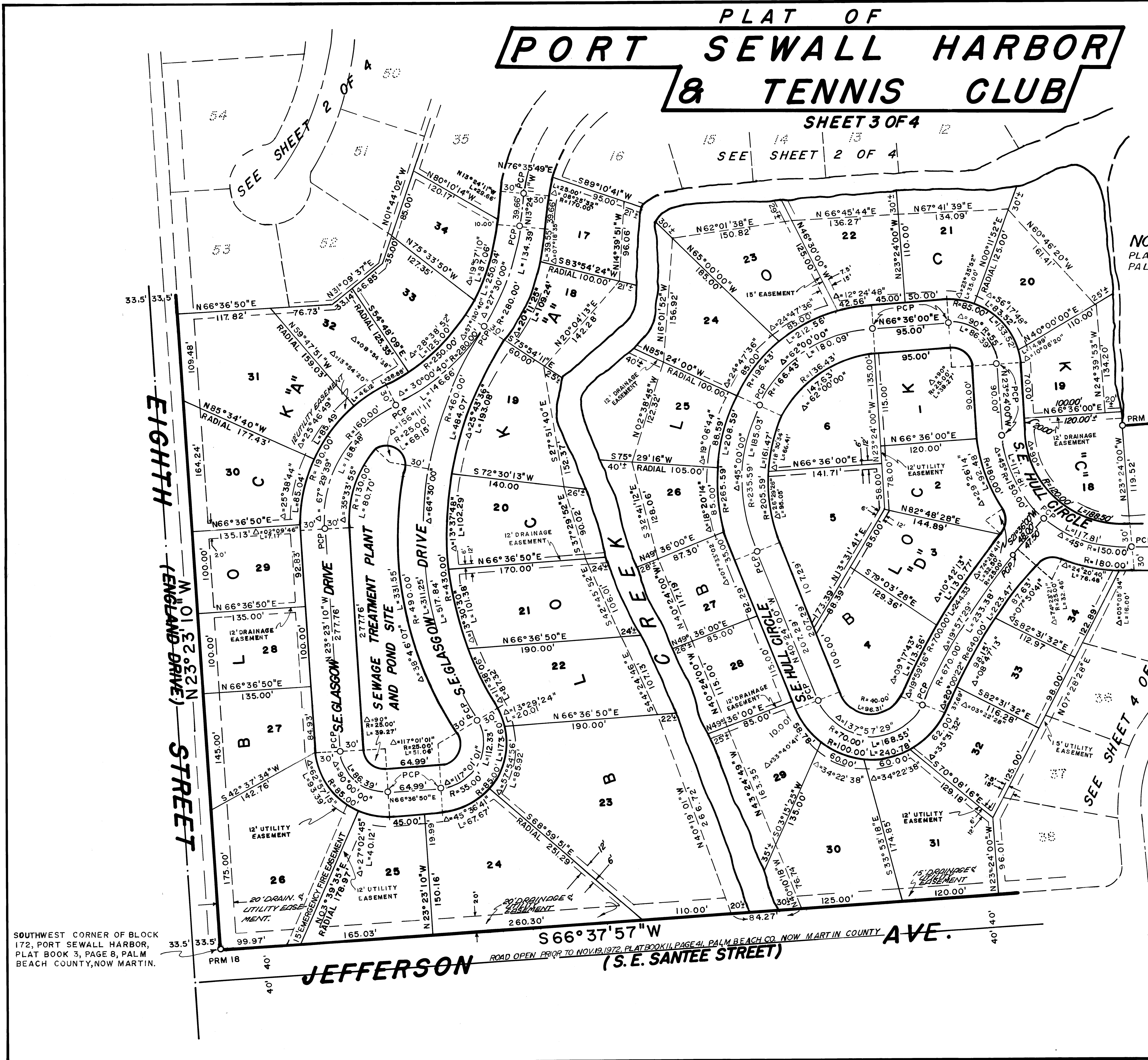
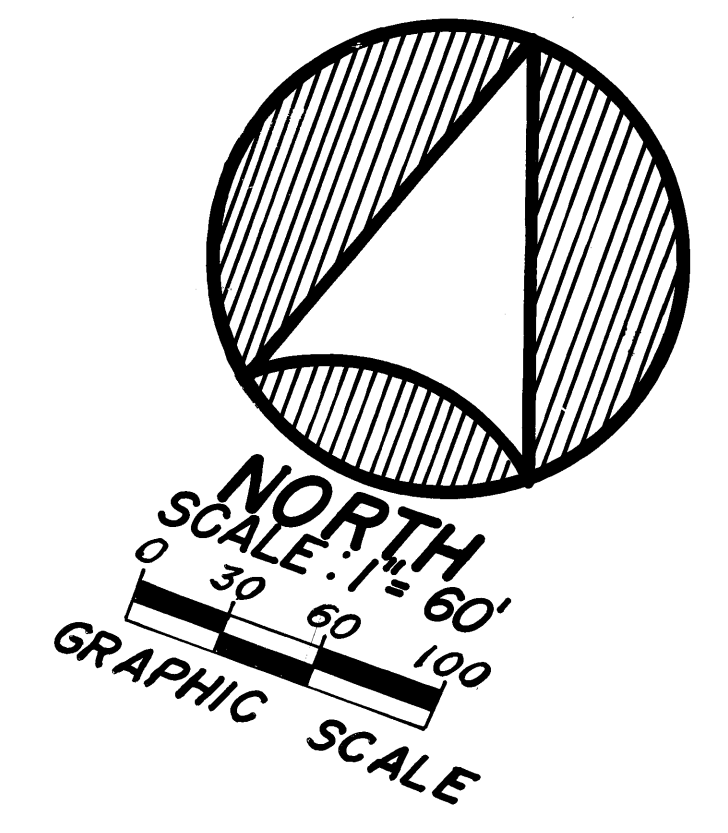
SEE SHEET 2 OF 4

**CERTIFICATE OF APPROVAL OF COUNTY CLERK
STATE OF FLORIDA
COUNTY OF MARTIN**

I, _____, COUNTY CLERK OF MARTIN COUNTY, FLORIDA,
HEREBY CERTIFY THAT THIS PLAT HAS BEEN EXAMINED AND
THAT IT COMPLIES IN FORM WITH ALL THE REQUIREMENTS OF
THE STATUTES OF FLORIDA PERTAINING TO MAPS AND PLATS,
AND THAT THIS PLAT HAS BEEN FILED FOR RECORD
IN PLAT BOOK 6, PAGE 46, PUBLIC RECORDS OF MARTIN
COUNTY, FLORIDA, THIS _____ DAY OF _____ A.D. 19____.

FILE NO. _____ NAME, CLERK _____
MARTIN COUNTY, FLORIDA

NOT A PART OF THIS PLAT
PLATTED, GOLDEN GATE S/D, PLAT BOOK 11, PAGE 41,
PALM BEACH, NOW MARTIN COUNTY, FLORIDA.



SOUTHWEST CORNER OF BLOCK
172, PORT SEWALL HARBOR,
PLAT BOOK 3, PAGE 8, PALM
BEACH COUNTY, NOW MARTIN.

NOTE: BEARINGS ON ASSUMED DATUM
FOR CALCULATION PURPOSES

GREECH & ASSOC.
SURVEYORS & ENGINEERS
STUART _____, FLORIDA